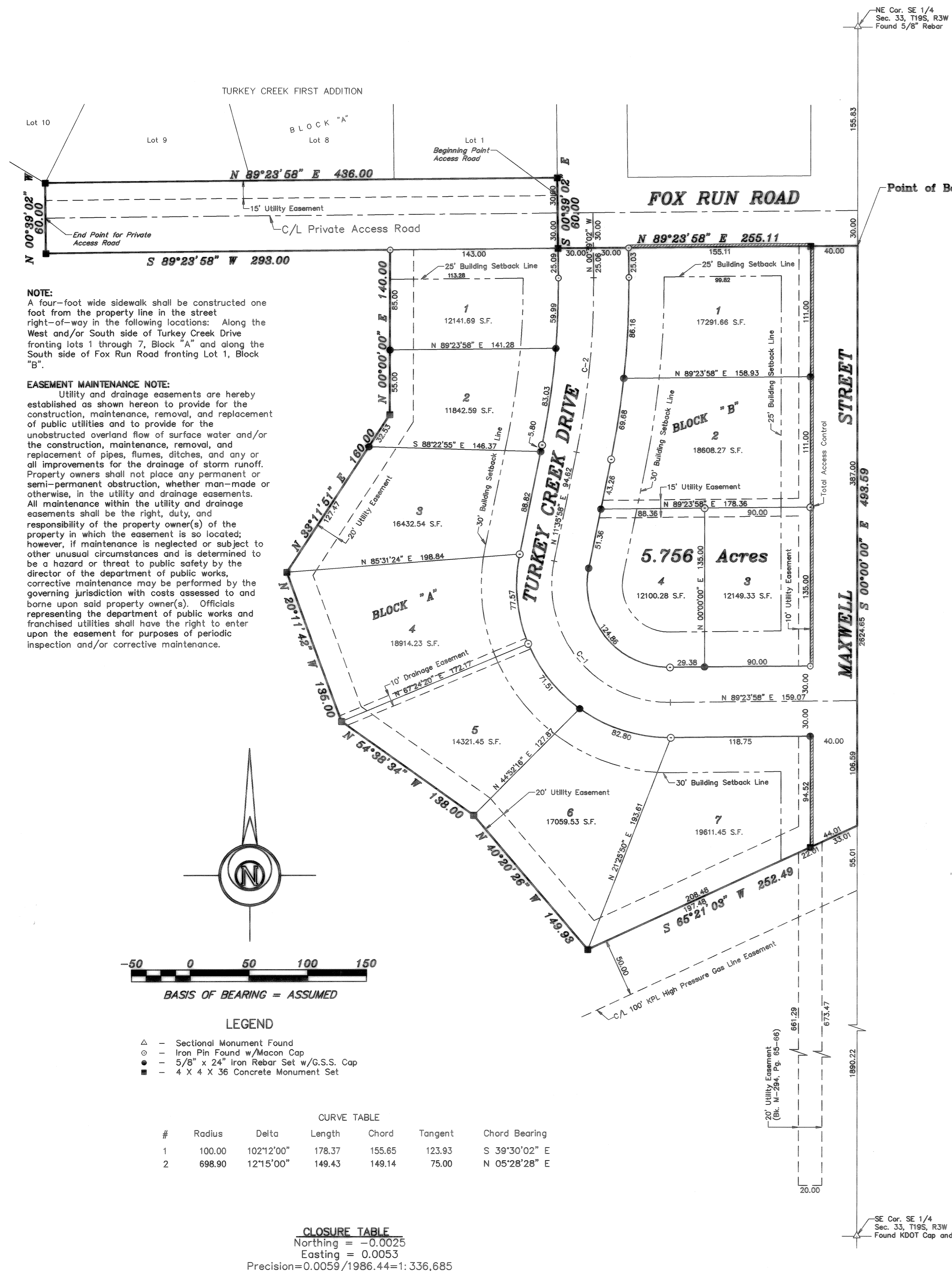


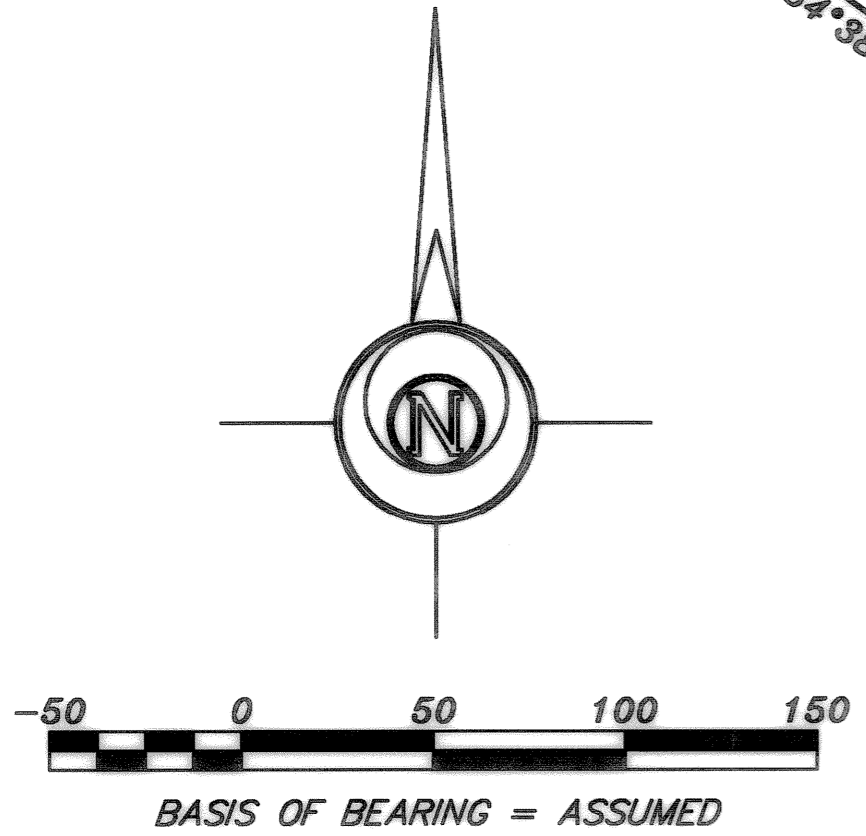
REPLAT OF TURKEY CREEK FOURTH ADDITION

A SUBDIVISION IN THE SOUTHEAST QUARTER OF SECTION 33,
TOWNSHIP 19 SOUTH, RANGE 3 WEST OF THE 6TH PRINCIPAL
MERIDIAN IN McPHERSON, McPHERSON COUNTY, KANSAS.



NOTE:
A four-foot wide sidewalk shall be constructed one foot from the property line in the street right-of-way in the following locations: Along the West and/or South side of Turkey Creek Drive fronting lots 1 through 7, Block "A" and along the South side of Fox Run Road fronting Lot 1, Block "B".

EASEMENT MAINTENANCE NOTE:
Utility and drainage easements are hereby established as shown hereon to provide for the construction, maintenance, removal, and replacement of public utilities and to provide for the unobstructed overland flow of surface water and/or the construction, maintenance, removal, and replacement of pipes, flumes, ditches, and any or all improvements for the drainage of storm runoff. Property owners shall not place any permanent or semi-permanent obstruction, whether man-made or otherwise, in the utility and drainage easements. All maintenance within the utility and drainage easements shall be the right, duty, and responsibility of the property owner(s) of the property in which the easement is so located; however, if maintenance is neglected or subject to other unusual circumstances and is determined to be a hazard or threat to public safety by the director of the department of public works, corrective maintenance may be performed by the governing jurisdiction with costs assessed to and borne upon said property owner(s). Officials representing the department of public works and franchised utilities shall have the right to enter upon the easement for purposes of periodic inspection and/or corrective maintenance.



LEGEND

- △ - Sectional Monument Found
- - Iron Pin Found w/Mocon Cap
- - 5/8" x 24" Iron Rebar Set w/G.S.S. Cap
- - 4 X 4 X 36 Concrete Monument Set

CURVE TABLE

#	Radius	Delta	Length	Chord	Tangent	Chord Bearing
1	100.00	102°12'00"	178.37	155.65	123.93	S 39°30'02" E
2	698.90	12°15'00"	149.43	149.14	75.00	N 05°28'28" E

CLOSURE TABLE

Northing = -0.0025
Easting = 0.0053
Precision = 0.0059/1986.44 = 1:336,685

COUNTY CLERK AND CITY CLERK CERTIFICATE

STATE OF KANSAS }
COUNTY OF McPHERSON } SS
CITY OF McPHERSON }

We, the undersigned, County Clerk of McPherson County, Kansas and City Clerk of the City of McPherson, Kansas, within our respective jurisdictions, do hereby certify that at the date of this certificate, all currently due and owing taxes and special assessments of any kind assessed against any of the land included in this plat, have been paid.

Date Signed: September 10, 2002
Susan R. Meng, County Clerk (SEAL)

Date Signed: January 28, 2002
Gary L. Meagher, City Clerk/Administrator (SEAL)

GOVERNING BODY CERTIFICATE

STATE OF KANSAS }
COUNTY OF McPHERSON } SS
CITY OF McPHERSON }

The dedications shown on this plat, if any, are hereby accepted by the Governing Body of the City of McPherson, Kansas, on January 28, 2002.

Mayor
Vernon Dossett

ATTEST:
Gary L. Meagher, City Clerk/Administrator, Entered on transfer record on September 10, 2002.
Susan R. Meng, County Clerk

CITY ATTORNEY'S CERTIFICATE

STATE OF KANSAS }
COUNTY OF McPHERSON } SS
CITY OF McPHERSON }

This plat is approved pursuant to the provisions of K.S.A. 12-401.

Date Signed: January 28, 2002
Phillip C. Lacey, City Attorney

CERTIFICATE AS TO CITY PUBLIC IMPROVEMENTS

We, the undersigned, do hereby certify that the required guarantees are posted with the City for completion of improvements covering all streets, storm sewers, sanitary sewer system, and domestic water supply and distribution system pertaining to the subject plat and not under other Federal, State, or County completion obligations; which are based on a licensed engineer's plans and specifications; and which are approved by all public authorities having jurisdiction.

Date Signed: January 21, 2002
Date Signed: Jan 20, 2002

L. Stephen Schmidt, City Engineer, City of McPherson, Kansas
Richard N. Anderson, General Manager of Board of Public Utilities City of McPherson, Kansas

REGISTER OF DEEDS CERTIFICATE

State of Kansas, McPherson Co., SS. 5422
This instrument was filed for record on the 10 day of Sept 2002 at 8:00 o'clock a.m. and duly recorded in book 2816 on page 78
[Signature]
30.00

McPHERSON COUNTY REGISTER OF DEEDS KANSAS

Prepared For: **FINAL PLAT**

Description: **REPLAT OF TURKEY CREEK FOURTH ADDITION TO THE CITY OF McPHERSON, KANSAS**

Prepared By: **Garber Surveying Service, P.A.**
423 West 1st Ave. Hutchinson, Kansas 67501
129 E. Broadway, Suite 300 Newton, Kansas 67114
Phone (620) 665-7032 • FAX (620) 663-7401 Phone (316) 283-5053 • FAX (316) 283-5073

Drawn By: RDB Scale: 1"=50' Date of Field Work: June 15, 2000 Job No:
Checked By: DEG Date: 09/10/2001 Sheet 1 of 1 Sheet(s) G2000-319